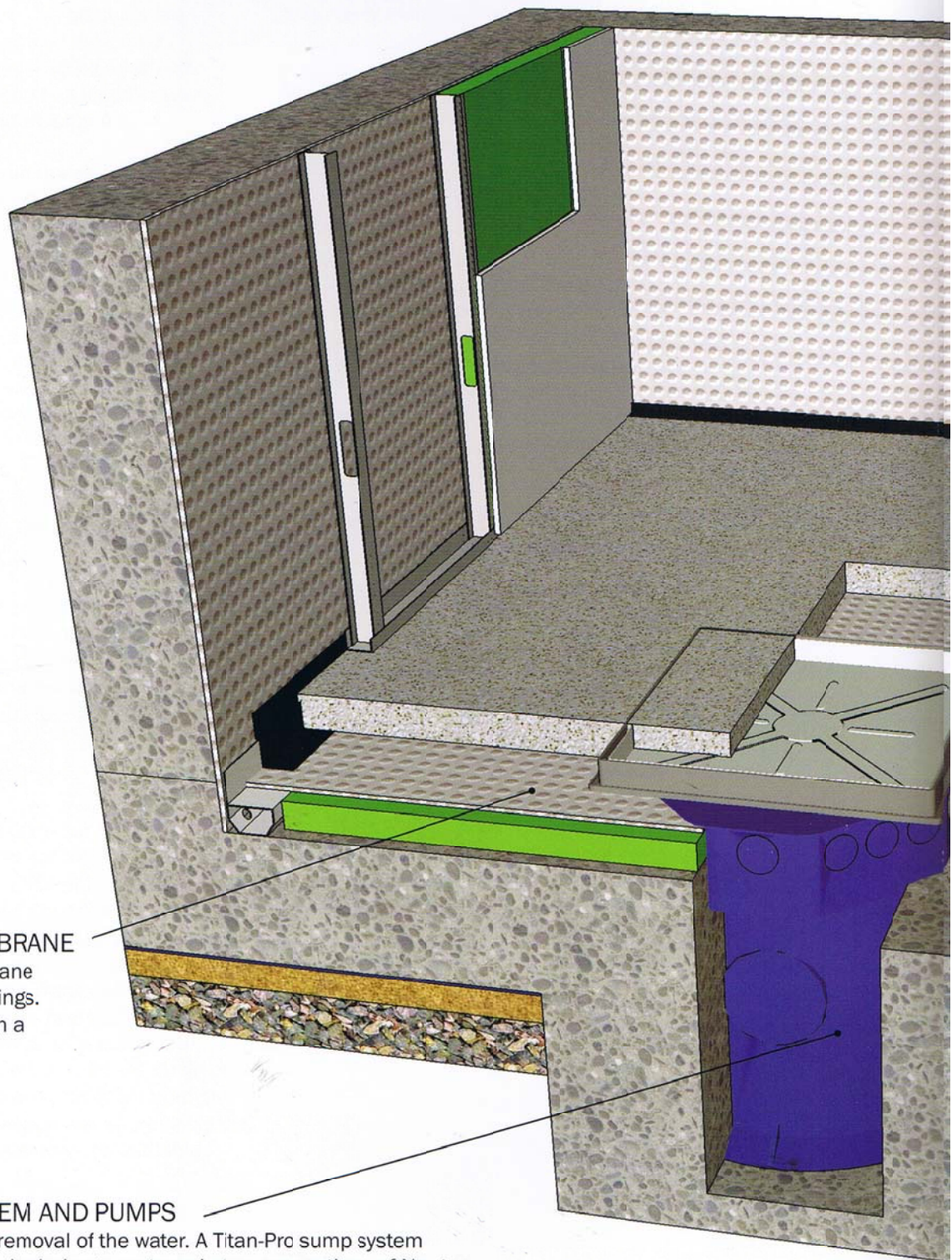


Newton System 500 is not only the safest form of waterproofing available, but one of the easiest to understand and specify. A guaranteed dry basement or cellar is just four easy steps away. The image shows Newton System 500 to a new-build concrete construction but the system is equally effective when applied to existing properties and even historical properties.



#### **STEP FOUR: FLOOR MEMBRANE**

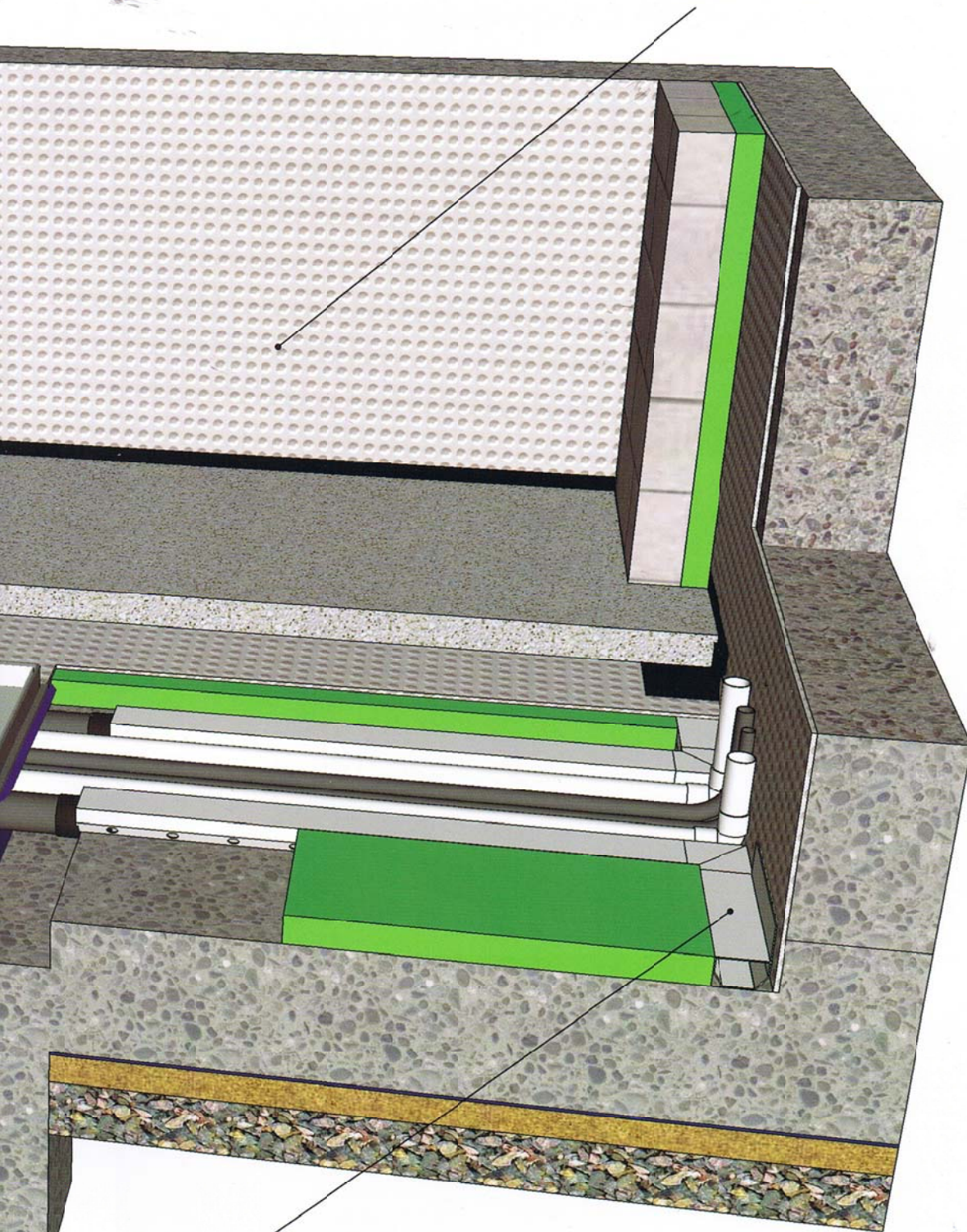
Choose the correct floor membrane for your finishes and floor loadings. Newton 508 is shown here with a 65mm screed above.

#### **STEP THREE: PUMP SYSTEM AND PUMPS**

Choose the correct method of removal of the water. A Titan-Pro sump system collects water from the Basedrain drainage system via two connections of Newton Floor drain. The pumps (not shown) would be chosen depending on factors such as the pumping head and the type of water collected.

### STEP ONE: WALL MEMBRANE

Chose an appropriate wall membrane to suit your wall finish. In this example, Newton 508 has been chosen for the walls and is shown with both independent metal frame dry-lining and concrete block wall coverings.



### STEP TWO: DRAINAGE SYSTEM

Chose your preferred method of water collection. Here Newton Basedrain is sat above the slab adjacent to a spacer of 50mm of closed cell insulation.